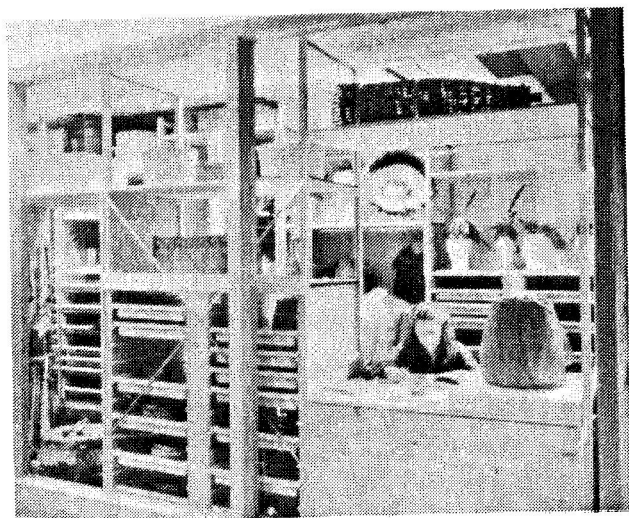


Northeastern Native American Study Storage



Steve Rosenthal

Native American Program

The Children's Museum

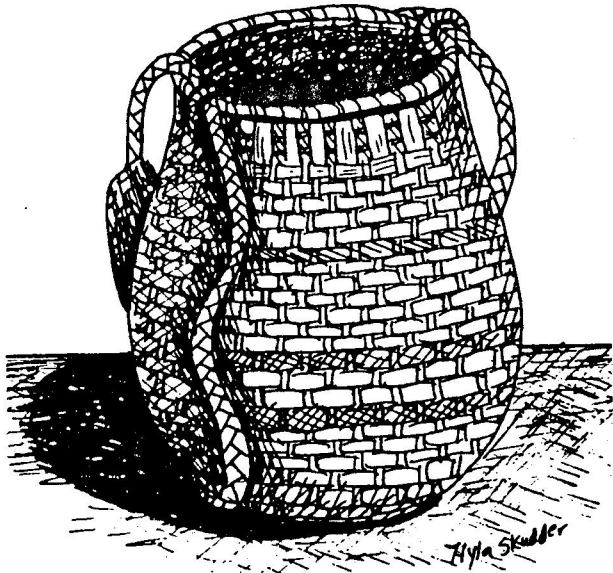
Boston, MA 02210

617-426-6500



What is Study Storage?

The Northeast Native American collection has been installed in a climate controlled space, with a window wall, at the back of the museum's "We're Still Here" exhibit. Not only is this a storage area, it is an enormous exhibit case for the museum's Northeast Native American collection. You can look through the window wall and see the entire range of objects that people have created. During posted hours, or by appointment with a curator, you can go inside and study the collection. We call this area Study Storage, because although it looks like an ordinary storage area, the critical difference is that all the objects have been sorted into access levels and packaged to minimize handling. Study Storage simultaneously protects and grants access to collections objects in storage.



A woven ashsplit harvest basket.

Who May Use Swdy Storage?

Anyone who is interested in Native American culture including:

Teachers planning a curriculum or students working on a paper may schedule time to study objects or themes.

Adults who are illustrating a book or preparing an exhibit.

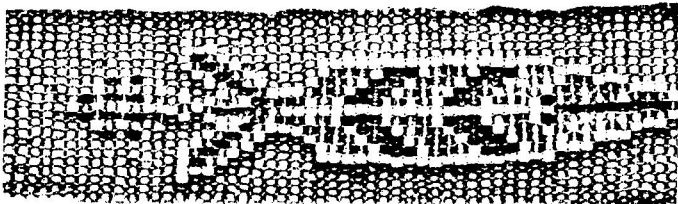
Artists who seek inspiration or answers to specific questions about process.

Museum professionals who wish to see the system, and select objects for loans.

Native Americans who want to visit cultural heirlooms or research traditional artisan techniques. They come to enjoy their heritage and share that pride with their friends.

School classes in small groups together with a teacher, may plan a visit by special arrangement with one of the curators.

Designed by Felice Lopez



How to Use Study Storage?

You may use the Study Storage in a variety of ways. During posted open hours you are invited in to browse through the collections. When you enter, the system is explained, and a trained interpreter is available to answer your questions and of course, to supervise your visit. You may also make an appointment with one the curators, Paulla Jennings at 617-426-6500 ext. 326 or Joan Lester at extension 261.



Gladys Widdiss, A Gay Head Wampanoag Potter

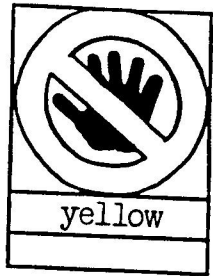
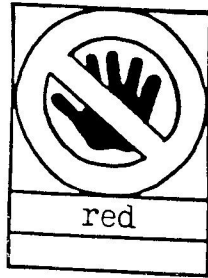
Resources:

Together with the objects, resources that further interpret the object are also available in Study Storage. These include duplicate catalog cards, document envelopes with museum records, a slide collection, interviews with artists, and books and articles that specifically relate to the objects in the collection.

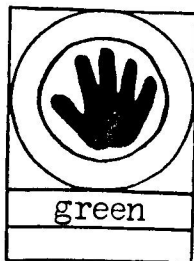


We have established three protection categories -

Looking Only, indicated by a Red Hands-Off Symbol, is for fragile, irreplaceable or one of a kind objects that cannot be touched, handled or removed from their package.



Careful Touching, indicated by a Yellow Access symbol, is for near duplicate objects that may be touched with great care.



Handling, indicated by a Green Hands-On Access symbol, is for extremely durable or replaceable contemporary objects, props and replicas. They may be handled.

Why Visit Study Storage?

It is our hope that from the moment you enter the space you will be effected by the quiet, ordered environment and by the presence of the objects themselves. The objects in Study Storage have power and immediacy. When you feel an object's weight and texture or examine its details, you may experience an intimate connection between you and the object. For some visitors, the experience goes still deeper. They are able to reach out and imagine a moment in somebody else's life.

A trained staff member is available to answer questions, and direct visitors to additional resources. This staff availability is the other element that makes Study Storage so special. In Study Storage, there is an immediate response, and if desired, the potential for further dialogue. Staff serve as the facilitators of individualized, personalized learning.

